

TECHNA-CHECK® IO100T Digital I/O Interface

Parallel Digital I/O Interface

An interface unit which interfaces traditional parallel I/O to the **TECHNA CHECK®** TPCI120 unit.

IO100T features.

- ◆ TTBUS Networked Unit
- ◆ 3 Relay Alarm Outputs
- ◆ 7 Digital Inputs for Cut-Number
- ◆ Digital Input for START and RESET

Technical Specification

Mechanical

Housing: Polycarbonate.
Mounting: 35 mm DIN-rail.
Protection Class: IP40.
Temp. Range: -15 to + 50 C.
Weight: App. 300g (1 lb).
Dimensions: D 118 x B 45 x H 137,5 mm.
Connections: Max 2,5 mm² (AVG 24).

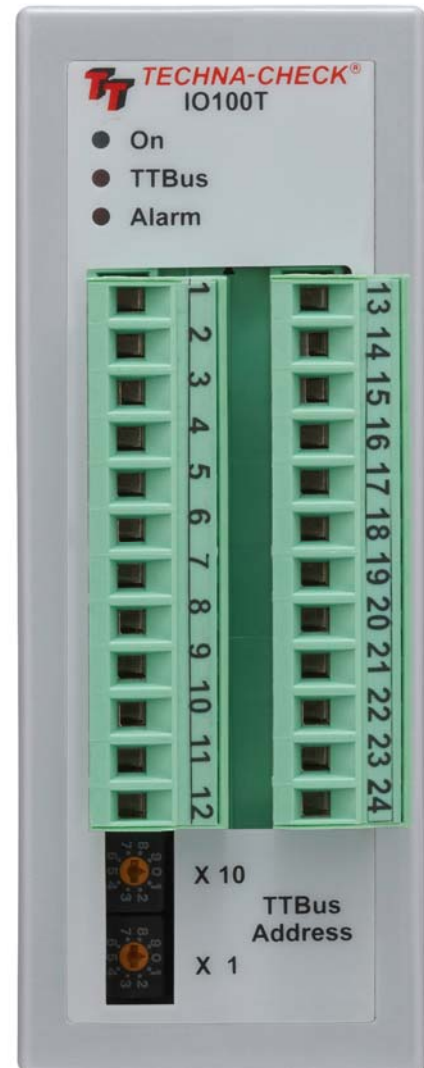
Electrical

Digital Inputs: 10-30 VDC.
Relay Outputs: 250 VAC max, 5 A max.
Sensor Input: Proprietary. Sensor supplied with unit.
Supply: 18-24 V DC max. 2.5 Watt.
TTBUS: RS485.

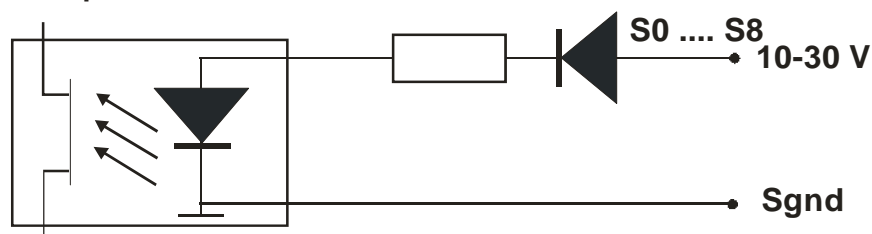
The IO100T interfaces traditional NC-controllers, which are not Profibus capable, to the **TECHNA CHECK®** TPCI120 Tool-Monitor-System.

It is possible for multiple channels (spindles) to share a single IO100T. Could be a round-table machine where all stations changes operation (production change) simultaneously. In this case the alarms outputs is the logical OR of alarms generated by the channels. Thus if one channels makes an alarm the corresponding alarms relay is activated.

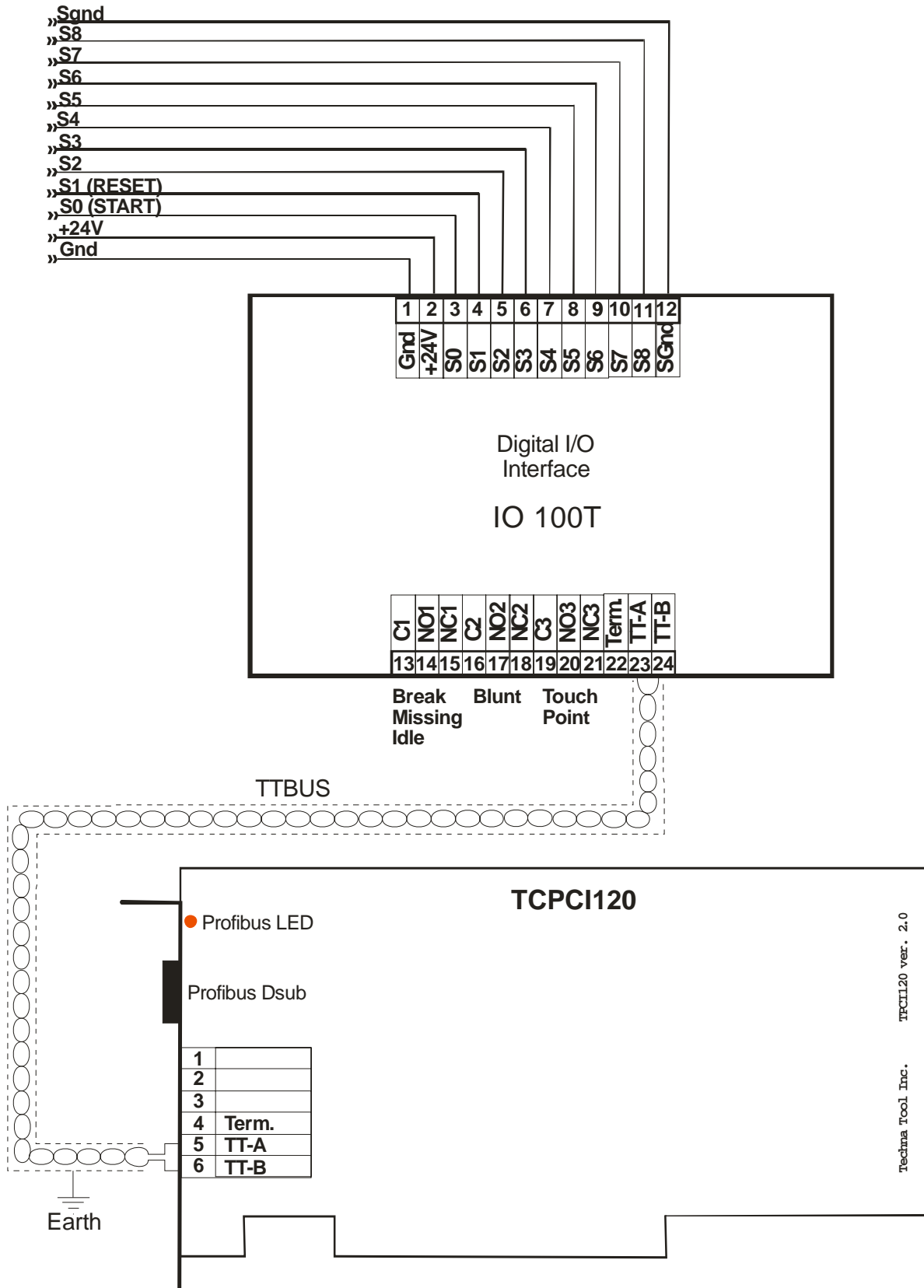
TECHNA CHECK® is a registered trade mark by Techna- Tool Inc., Hartland Wisconsin USA.



Digital inputs S0 - S8



IO100T Connection to TPCI120



Note!

Please use good-quality twisted pair and shielded cable, earth-connected at one or both ends for the TTBUS network.

Last unit in the TTBUS network chain must be terminated.

Please connect a wire between terminal 22 and 24 on the IO100T (the TTBUS slave), when termination is required.