

Techna-Check® PM-1

Unit Description:

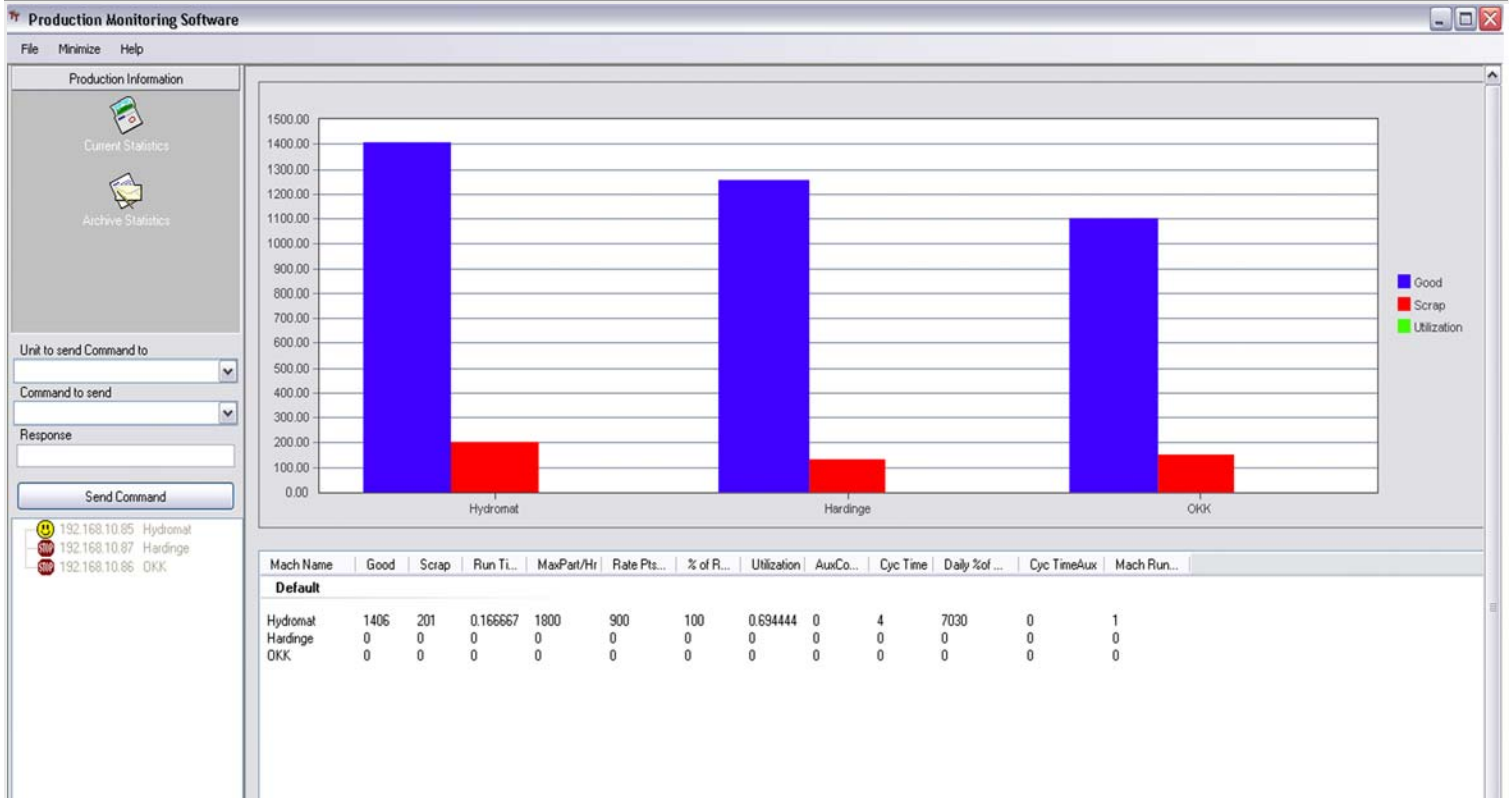
- Creates one common network for every machine on your shop floor allowing for efficient and accurate data collection
- Increases productivity by monitoring down time, running time, scrap count, and machine malfunctions
- Maximizes production and minimizes manufacturing errors with real-time monitoring so you can fix problems immediately
- Reduces product costs by decreasing inefficiency in the manufacturing process
- Generates information revealing what is occurring in every aspect of the operation of each machine and the time involved.
- Draws information from the machine without human intervention.
- Perfect unit for ISO 9000
- Automatic daily report generation
- Sends an automatic email if a machine goes down

Applications:

- CNC Machines
- Die Casting
- Transfer Lines
- Screw Machines
- Rotary Transfer Machines
- Stamping & Press Machines
- Bottling & Canning Lines
- Packaging Lines
- Plastic Injection Molding
- Any high production job shop



Techna-Check® PM-1



Specifications:

- Expandable from 1-100 units
- Stand alone- no computer required on the machine to support the unit
- Standard ethernet connection
- Can be used with wireless networks (requires a wireless bridge)
- Removable Phoenix connector for easy wiring
- Opto-isolated 24 VDC inputs
- Unit powered by 24 VDC
- Windows 98, ME, NT, 2000 and XP compatible software
- Software generates custom reports
- All data is logged into an Access database at the end of each shift
- Compatible with any industrial 24 VDC sensor or switch
- Compatible with any industrial machine whether it is controlled by PC, PLC, CNC or Relays

Techna-Tool Inc.
553 S. Industrial Dr. Hartland, WI 53029
Phone 262-367-8665 Fax 262-367-0208
Email- techtool@techna-tool.com
www.techna-tool.com

Production Monitoring System