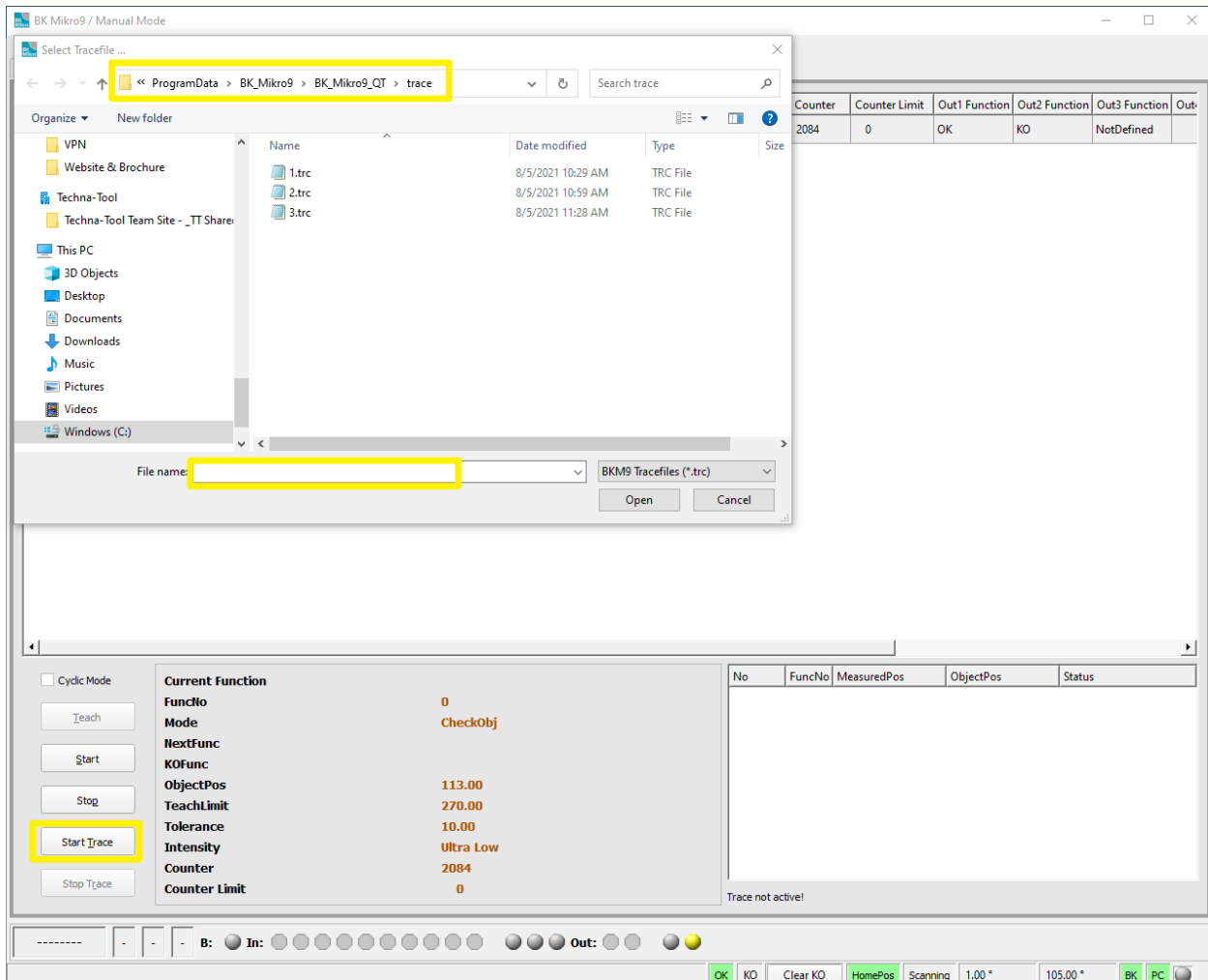


BK Mikro Trace Function

From BK Mikro software startup screen select BK-Mikro9→Manual Mode→Trace tab

Select: Start Trace→Give it a file name. This will normally default to saving the file in C:\Program Files (x86)\BK Mikro9\System Setup BK Mikro9 QT\trace. You can select another folder if you'd like. (If it won't let you run a trace try reopening software as an administrator. To do this close the software and reopen it by right clicking and selecting Run as Administrator.)



Each time the controller gets a start signal or teach input it will populate another entry in the area where the yellow box is in the photo on page 2. You can look at data here or open the file in excel, work or notepad to view the data.

No= The number of checks it has recorded

FuncNo= Is the Function number. For basic controllers it will normally be 0 for Premium it will equal the tool number you're checking.

MeasuredPos= The angle it actually checked. If it's less than the ObjectPos it stopped before hitting the object, if it's greater than it went past or missed the object.

ObjectPos= Is the stored position from the last teach/learn cycle

Status= OK if the check was good or KO if the check was bad and outside of the tolerance area it should be checking in. (If the status is -- that is usually show during a teach cycle)

If you want it to continuously check you can check mark the Cyclic Mode box then press the start button. It will repeatedly check the over and over. If you want it to stop on a fault check the Stop On KO box.

FuncNo	Name	Mode	BackMode	NextFunc	KOFunc	ObjectPos	TeachLimit	Tolerance	Intensity	Counter	Counter Limit	Out1 Function	Out2 Function	Out3 Function	Out
000		CheckObj				105.00	270.00	10.00	Ultra Low	2124	0	OK	KO	NotDefined	

No	FuncNo	MeasuredPos	ObjectPos	Status
90	0	105.00	105.00	OK
97	0	105.00	105.00	OK
98	0	105.00	105.00	OK
99	0	105.00	105.00	OK
100	0	105.00	105.00	OK
101	0	105.00	105.00	OK
102	0	73.80	105.00	KO
103	0	105.00	105.00	OK
104	0	105.00	105.00	OK
105	0	105.00	105.00	OK
106	0	105.00	105.00	OK